



HAPPY FOREST LIMITED

company Profile 2025





WHO WE ARE

At Happy Forest Limited, we exist for a cause; to promote sustainable development across all development sectors. We provide and deliver tenable solutions to ensure the planet's full potential is realized while supporting human co-existence and safeguarding environmental sustainability. We decipher and manage Environmental, Social, Health and safety aspects of a project/program through an integrated approach. This is ardently executed by our experienced and knowledgeable team to reduce risks and subsequent development of strategic solutions and management systems

We strive to exceed the expectations of every client by offering technical know-how, outstanding customer service, flexibility, and greater value, thus optimizing system functionality and improving operation efficiency

MISSION

To transform and guide our clients to realize sustainable development through design of strategic solutions and management systems

VISION

To achieve sustainable development and a safe work environment




50+
Projects

7+
Years

15+
Experts

Out Team

Currently Happy forest has staff strength of over 15 permanent and lead consultants. The team comprise of Engineers, Occupational and Safety advisers, Environmentalists, Ecologists, Sociologists, Gender analysts, Anthropologists, Hygienists, Renewable energy experts, Fire risk advisers and Economists. The team has a combined experience of over 70 years in consultancy and over 100 projects experience.

An overhead, black and white photograph of three people in an office setting. They are gathered around a large table covered with architectural blueprints and various documents. One person on the left is leaning over the table, another in the center is holding a calculator, and a third on the right is also looking at the documents. On the table, there is a laptop, a hard hat, a mug, and a smartphone. The background shows a patterned carpet.

Our team has experience across a broad range of sectors and standards including: National governments Authorities across the region, multinational corporations, development agencies, international donors and Non-governmental Organizations



Services



Environmental and Social Risk Management services



Occupational Health and Safety management services



Fire Risk Management Services



Monitoring and Evaluation



Resettlement Action Plan/LRP Implementation



Project Management



Energy Management

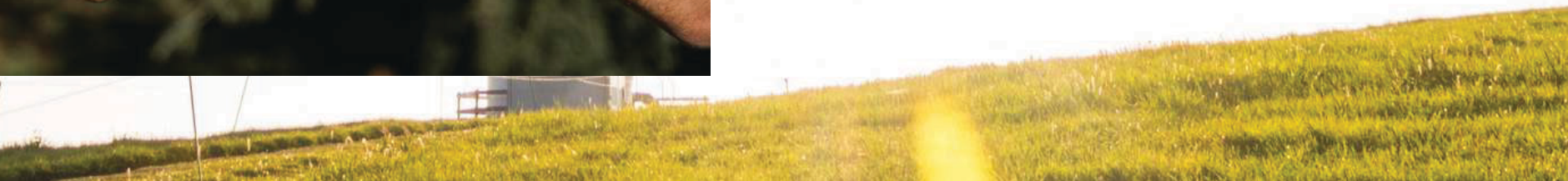


Waste management

Environmental & Social Risk management services.

In today's world, many organizations aim to have a more proactive approach to environmental management, comply with environmental regulations and improve their environmental performance. We strive to help companies fulfil the responsibility to society to implement environmentally sustainable practices. Our aim is to help our clients achieve their sustainability goals, address stakeholder concerns and social risks and implement efficient processes. We are particularly used to assessing large and complex projects across all business areas in the entire country and beyond. Our area of expertise ranges mainly in the following areas;

- Environmental and social impact assessment
- Resettlement/ Livelihood Action Plans
- Stakeholder and community engagements
- Environmental and social Management systems
- Gender Analysis





Occupational Health, Safety & Fire Risk Management services

Happy Forest Limited consults on Environmental, Health and Safety (EHS) as one of the options to stimulate Sustainable Development. Our goal is to help organizations across a wide range of industries to identify, manage and mitigate current and future risks based on the current EHS improvements. We offer a wide spectrum of consulting services in EHS and a range of training with proven international experience, expertise and project management. Our team includes specialists who are highly qualified to meet the complex and evolving needs of clients, whether large or small. Our expertise spans around;

- Legal compliance and permitting
- Internal and external audits
- Site inspections & reporting
- Trainings and Expert management
- Environmental strategies
- Corporate Audits and Risk Management
- Development of HSE standards and procedures
- Hazardous material management
- Health and safety investigations, compliance and programs





Project Management

Happy Forest has developed a good project management team based on our team's accumulation of skills, knowledge, and most of all our local and International experience. Our aim is to deliver project on schedule and within budget, while ensuring that all operational requirements are safely met. In addition to assessing the compliance with internal and external requirements, our approach is to transfer our expertise by engaging with the Client at all organizational levels, thereby contributing to improved Environment and Social performance moving forward.

Our experienced professionals assess and understand your priorities, while appraising the technical, environmental and commercial issues surrounding each project. We leverage this extensive experience to plan and implement projects efficiently, with a focus on cost, schedule, quality and safety. We are here to help guide you from initial conceptual development through to final project delivery.





Energy Management

HFL energy experts have come in hand in helping companies to manage all aspects of energy use and also devise solutions that maximize efficiency and improve long-term reliability. Our main goal is reducing energy consumption and costs, advise on self-supply options and ensure compliance with the Energy regulations. We also help our clients in addressing key issues that includes; finding the right combination of on-site generation, evaluating energy sources and systems, including green technologies and planning for a hike in energy demand. Some of our services include;

- Energy audits and surveys
- Energy compliance services
- Organizations technical training on proper energy consumption.





Waste Management

At HFL we offer Waste Management consulting services on both Effluent (Wastewater) and Solid Waste Management. The services are rendered on evaluation of need and provision of appropriate sanitation and sewerage for residential units or institutions or for specific localities. We offer tailored and customized onsite systems for areas that are distant from municipal sewerage systems as well as partnering with Environmental Bodies licenced waste handlers for solid waste management and disposal from such sites including the management and disposal of hazardous wastes. Our experts are familiar with major international and local waste regulations and international best practices, as well as the latest innovations and technologies in waste management





Environmental Baseline surveys

We are committed to the preservation of the environment on any project we undertake. HFL establishes the environmental characteristics of the project area through extensive literature review, field sampling and measurements, observation, laboratory analysis, stakeholder consultation and data interpretation. Our comprehensive understanding of natural systems and our experience has made us a trusted advisor and strategic partner to a host of market-leading clients, including renewables; power; mining; transport, fishing and aquaculture, oil and gas; transport and telecommunication; manufacturing and industry; land development; financial, non-profit, and government agencies. Our area of expertise ranges in the following areas;

- Flicker surveys
- Ecological surveys
- Air Quality
- Noise quality
- Ornithological Survey
- Cultural Heritage and Archaeology Surveys





Environmental and social due diligence (ESDD)

HFL main goal is to assist companies and investors in management of Environmental and social and sustainability risks and issues that arise in projects. We have the ability to support any project, at any stage across Africa. Our team of specialists have the experience to help by providing insightful due diligence consultancy that supports decision making and facilitates proper project implementation. We also possess the ability to mobilise resources to beat the timelines and also design long term action plans that will correct any issues and risks identified.



The background of the slide features a gradient sky transitioning from a deep orange at the top to a darker, almost black hue at the bottom. Silhouetted against this sky are several wind turbines. One large turbine is in the foreground on the left, with its three blades clearly visible. Another smaller turbine is visible in the distance to the right, and a third, even smaller one is in the distance to the left. The overall mood is serene and focused on renewable energy.

**ENVIRONMENTAL &
SOCIAL RISK
MANAGEMENT
PROJECTS**

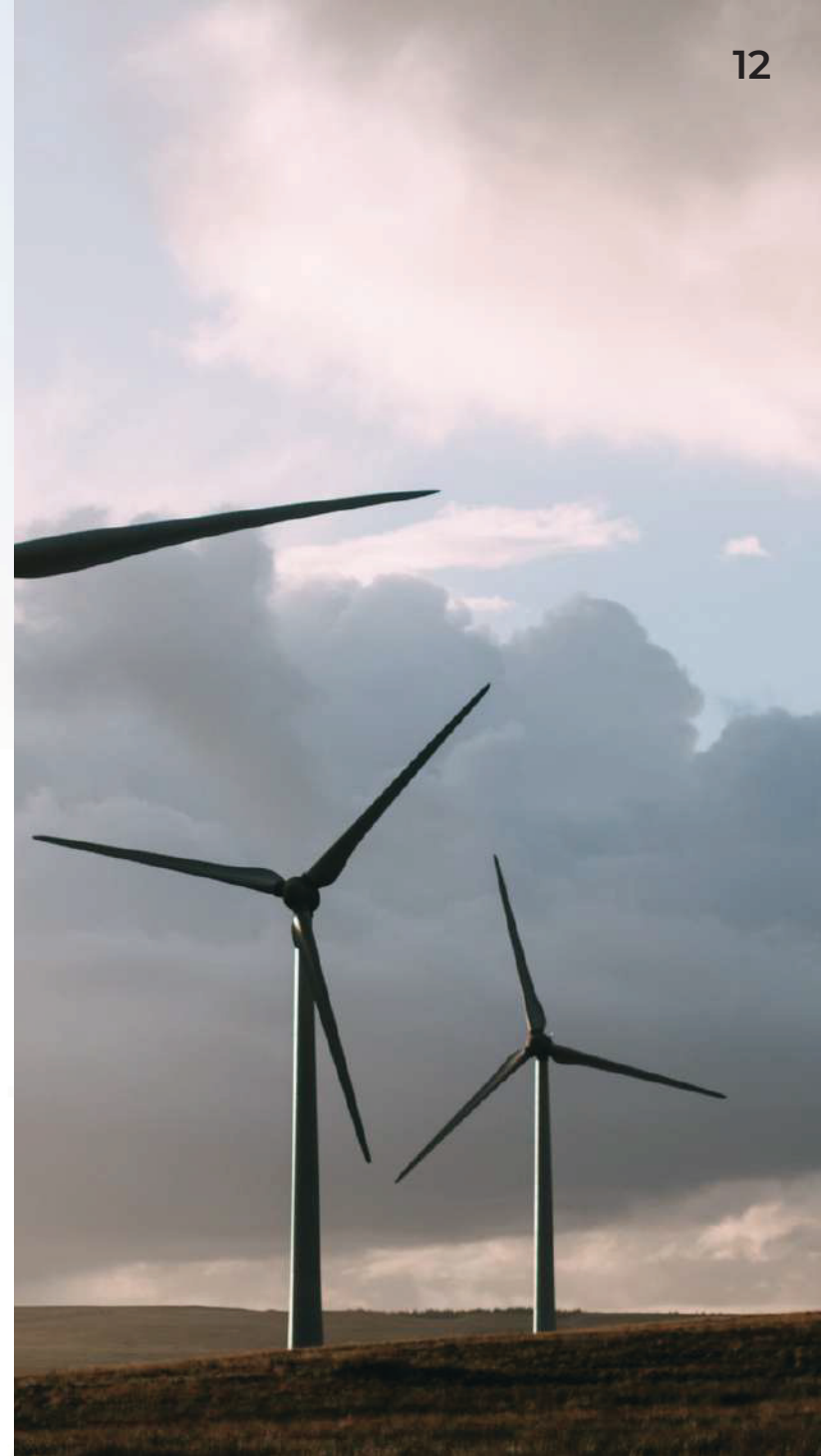
1. Proposed 50MW wind farm(the project) in Ndeiya, Kikuyu sub county, Kiambu county by Aperture Green Power Company Ltd

Project Description

Environmental and Social Impact Assessment (ESIA) for the entire project. The project was done in consortium with Alvus ESG Consulting.

Services Provided

- Baseline environmental surveys (Noise, Flicker, Ecology, Bird/Bats survey, Air quality, Soil and Water analysis)
- Social baseline surveys
- Archaeological/cultural heritage surveys
- Stakeholder's engagements
- Site investigations and remedial services
- Advisory



2. Proposed 17.5 km Aperture Windfarm Transmission Line in Limuru Sub county, Kiambu County

Project Description

Environmental and Social Impact Assessment (ESIA) study report for the proposed 17.5 km Aperture Windfarm Transmission Line in Limuru Sub county, Kiambu County. The project was done in consortium with AMEA Power.

Services Provided

- Identification and evaluation of potential environmental and social effects associated with the Project implementation, mitigation measures and corrective measures to monitor the implementation.
- Intensive Stakeholder engagement that included Project affected persons and Interested parties.
- Social Baseline surveys, archeological and cultural heritage surveys
- Site Investigation
- Advisory



3. Proposed Development of 40MW Kajiado Solar PV Plant

Project Description

Environmental and Social Impact Assessment (ESIA) of Proposed Development of a 40MW Kajiado Solar PV Plant and an Abbreviated Resettlement Action Plan for the Transmission line. The project was done in Consortium with WSP Environmental (Pty) Ltd (WSP) on behalf of Neo Thermis Energy(The Client). The intention was to construct the Project in four phases of 10MW each and thereafter the associated transmission line. The Project was to be developed by the Special Purpose Vehicle (SPV) Company, Hannan Arya Energy (K) Limited (Hannan Arya).

Services Provided

- Baseline environmental surveys
- Social baselines assessment.
- Archaeological/cultural heritage impact assessment
- Stakeholder's engagements
- Abbreviated resettlement action plan for the 11km transmission line
- Advisory



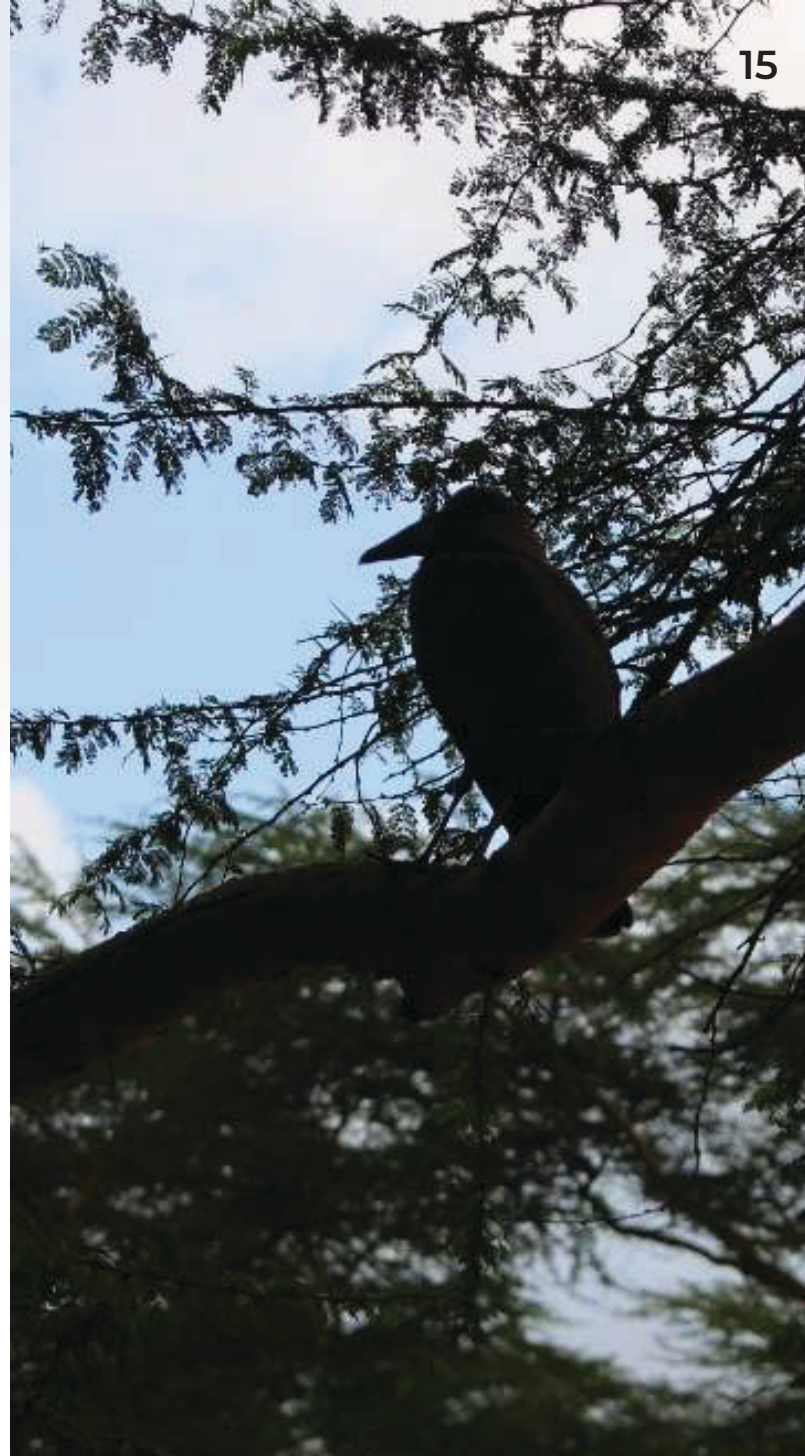
4. Zambia Pensulo Megabat Survey

Project Description

Happy Forest was commissioned to conduct bats survey in Zambia(Kisanga Forest) to provide information on the species of bat, type of bat roost and the features used by the roosting bats. This was done for six months to provide pragmatic mitigation proportionate to the roost type and the species present. The project was undertaken in a consortium with Alvus ESG Consulting

Services Provided

- Quality assurance of the Bats Data
- Mapping out of Bats of Family Eidolons
- Data Entry and analysis



5. Environmental Consultancy services for Kenyatta University Teaching, Referral and Research hospital

Project Description

Happy forest has been undertaking Annual environmental audits and Baseline surveys for the entire hospital facility that is well equipped with state of art medical amenities with a 650 bed capacity.

Services Provided

- Baseline surveys that include; Water Quality, Noise Level Measurements, Air Quality and Soil Analysis.
- Environmental audits
- Compliance and Permitting
- Site Investigations and remedial services
- Advisory



**KENYATTA UNIVERSITY TEACHING, REFERRAL
& RESEARCH HOSPITAL (KUTRRH)**



OSH & FIRE RISK MANAGEMENT PROJECTS

1. Annual Occupational Safety and Health and Fire Safety Audits (EHFS) for all the Standard Chartered Bank and Cooperative Bank Branches

Project Description

Happy Forest has been retained by Standard Chartered Bank and Cooperative bank to provide compliance Occupational Safety and Health and Fire Safety Audits (EHSF) for all their branches regionally. Site audits are conducted in 159 branches of Cooperative bank of Kenya and over 35 branches of Standard Chartered Bank.

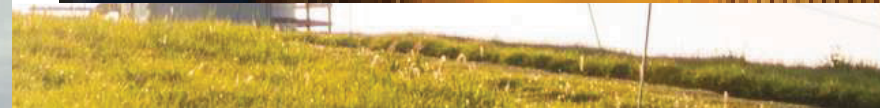
Services Provided

- Branch inspections and remedial services
- Occupational Safety and health audits
- Fire risk audits
- Compliance and Permitting
- Advisory



 CO-OPERATIVE BANK
WE ALSO CARE

 standard
chartered



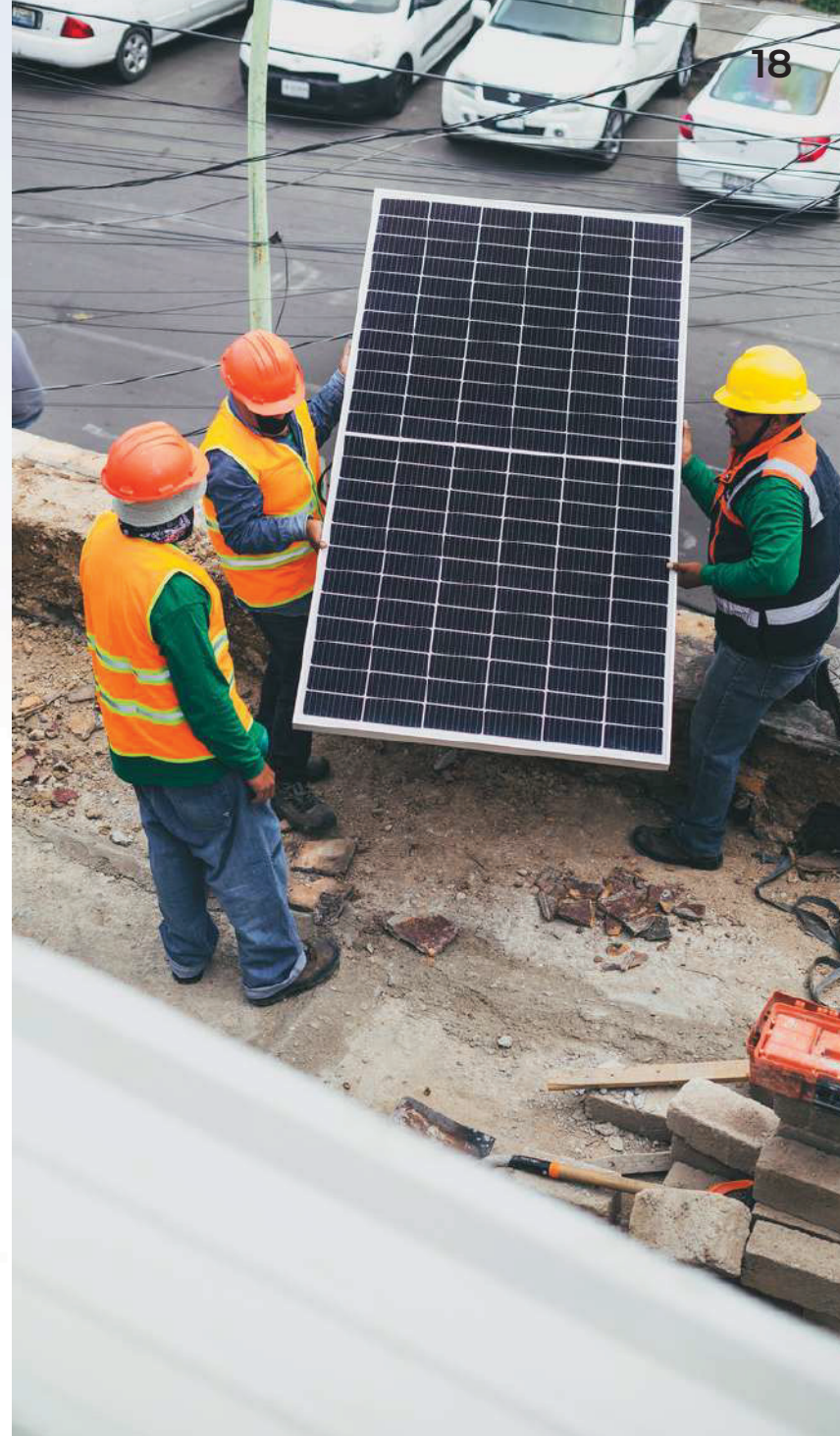
2. Occupational Safety and Health/ Fire Audits and Risk Management for Over 20 Solar Minigrids for Powerhive East Africa Limited

Project Description

Happy Forest has been commissioned by Powerhive East Africa from 2017 to be conducting annual Occupational Safety and Health and Fire Safety Audits (EHSF) for all their sites regionally.

Services Provided

- Site inspections and remedial services
- Occupational Safety and health audits
- Fire risk audits
- Other Risk assessments
- Compliance and Permitting
- Supervision and Monitoring
- Advisory



3. Occupational Health and Safety and Fire Safety Audits and Risk Assessment for BBC East Africa Workplaces EHS assessments and Audits

Project Description

Happy Forest has been commissioned by British Broadcasting Corporation East Africa from 2021 to be conducting annual Occupational Safety and Health, risk Assessments and Fire Safety Audits for all their offices regionally.

Services Provided

- Site inspections and remedial services
- Occupational Safety and health audits
- Fire risk audits
- Other Risk assessments
- Compliance and Permitting



4. Occupational Safety and Health and Fire Safety Audits (EHFS) For Koko Network

Project Description

Occupational Safety and Health and Fire Safety Audits (EHFS) for Koko Network branches and offices regionally.

Services Provided

- Site inspections and remedial services
- Occupational Safety and health audits
- Fire risk audits
- Other Risk assessments
- Compliance and Permitting



5. Environmental, Occupational Safety and Health and Fire Safety Audit for all Tosha Petroleum Limited Service Stations regionally.

Project Description

We are retained by Tosha Petroleum Limited to provide compliance Occupational Safety and Health and Fire Safety Audits (EHSF) for all their service stations in the region.

Services Provided

- Site Assessments, Investigation and remedial services
- Effluent discharge data/ sample collection and analysis
- Occupational Safety and health audits
- Fire risk audits
- Advisory
- Compliance and Permitting



A yellow tracked excavator is shown in a natural setting, positioned on a large pile of grey gravel. The excavator's arm is extended upwards. The background consists of lush green trees and a clear sky. A semi-transparent white rectangular box is overlaid on the right side of the image, containing the text 'ENVIRONMENTAL AND SOCIAL DUE DILIGENCE' in bold, dark blue, uppercase letters.

**ENVIRONMENTAL AND
SOCIAL DUE
DILIGENCE**

1. The Environmental and Social Due Diligence (ESDD) for 50MW Corner Baridi windfarm and 16Km Transmission Line (the Project) in Kajiado County

Project Description

Happy forest in consortium with Alvus Consulting were commissioned by Prunus Energy Limited to perform preliminary Environmental and social Impact Assessment review and due diligence works on behalf of AMEA Africa Development as per IFC Performance Standards (PS) on Social and Environmental Sustainability, 2012 and Equator Principles, Health and Safety guidelines and other applicable national/international rules and regulations.

Services Provided

- Collection and collation of baseline environmental and socio-economic information of the study area
- Assessment of potential project level environmental and social impacts
- Preparation of the ESDD report that addresses the environmental and social issues in line with the IFC standards



2. The Environmental and Social Due Diligence (ESDD) for 90MW Bahari windfarm and Transmission Line (the Project) in Lamu County.

Project Description

Alvus Consulting and Happy forest were commissioned by AMEA Power to perform preliminary Environmental and social Impact Assessment review and due diligence works on the 90MW Bahari Windfarm and transmission line as per IFC Performance Standards (PS) on Social and Environmental Sustainability, 2012 and Equator Principles, Health and Safety guidelines and other applicable national/international rules and regulations.

Services Provided

- Collection and collation of baseline environmental and socio-economic information of the study area
- Assessment of potential project level environmental and social impacts
- Preparation of the ESDD report that addresses the environmental and social issues in line with the IFC standards



2. The Environmental and Social Due Diligence (ESDD) for the Makueni PV Plant.

Project Description

Happy forest was commissioned to perform preliminary Environmental and social Impact Assessment review and due diligence works on the Makueni PV Plant

Services Provided

- Identifying Potential Environmental and Social safeguards risks for the project
- Advising on the level of compliance with the Kenyan and IFC standards
- Discussion and advise of Contextual Human rights risks




Our Clients




CONTACT US


Main Office

 Repen Complex, Suite B-203,
Along Mombasa Road, Nairobi
P.O. Box, 45947 - 00100, Nairobi
Kenya

Eldoret Branch

 RKeitich centre building 2nd floor
Eldoret Nakuru highway
Eldoret

 info@happyforestlimited.com

 Cell: 0743-55 2659
Tel: +254 020 2300863

 www.happyforestlimited.com